



JOB NAME:	CONTRACTOR:
JOB LOCATION:	APPROVAL:
ENGINEER:	CONTRACTOR P.O.:
APPROVAL:	REPRESENTATIVE:

**8E3LPVC-0\* - 8E3TPVC-0\* 8E3LCPVC-0\* - 8E3TCPVC-0\***  
(PVC) (CPVC)

**PVC-BV3T OR PVC-BV3L DIRECT MOUNT, 3-WAY PVC, FULL PORT BALL VALVE W ELECTRIC ACTUATOR SIZES**

**1/2" TO 2"**

**PVC-BV3T OR PVC-BV3L DIRECT MOUNT, 3-WAY CPVC, FULL PORT BALL VALVE W ELECTRIC ACTUATOR SIZES**

**1/2" TO 2"**

*001	12V AC/DC	*002	24V AC/DC	*003	100-240VAC
*01*	BATTERY BACKUP	*02*	POSITIONER	*04*	BAT. BACKUP W POS

### SPECIFICATIONS

The valve body, stem, ball and unions shall be made of PVC compound which shall meet classification 12454 of ASTM D 1784. The ball seats shall be made of PTFE and the O-Ring seals shall be made of EPDM.

The PVC IPS/Socket connectors shall conform to the dimensional standards ASTM D2466 and ASTM D2467, and the CPVC shall conform to the dimensional standard ASTM F439 (2-way only). The NPT PVC connectors shall conform to the dimensional standards of ASTM D2464, ASTM F1498, and ANSI B1.20.1 thread depths.

The electric actuator shall be made from a light weight technopolymer housing, incorporate two auxiliary limit switches, a torque limiter, heater & thermostat, a 75% duty cycle, dual voltage motors, and a NEMA 4 enclosure.

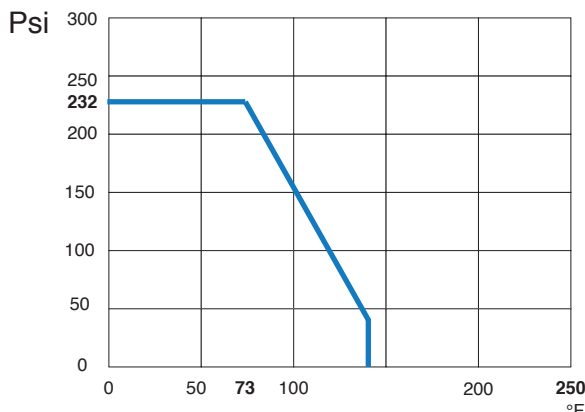
### ACTUATOR FEATURES

- NEMA 4, 4X Housing - CSA, UL approved
- 12V/24V AC/DC and 100-240V AC Models Available
- ISO 5211, F03/F05 base with 11mm female drive
- VB015 -12/24V AC - 50% Duty Cycle
- VB030-VB110 - 12/24V DC and 100-240V AC - 75% Duty Cycle
- High-Strength, Impact Resistant IP67 Technopolymer Housing
- Temperature Range -4°F to 131°F
- PG11 Electrical Connection/Optional
- 1/2" Conduit

### VALVE FEATURES

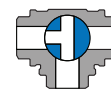
- 3-Way Full Port
- Size Range 1/2" Through 2"
- NPT and Socket Ends included
- EPDM Seats and Seals
- Dual Union Nut Locks
- 232 PSI at 73°F
- "L" and "T" Port Viton Seats and Seals Available

### PRESSURE TEMPERATURE CHART FOR PVC-BV3\*

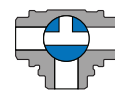


### FLOW PATH VARIATIONS

**T-PORT FLOW PATH A**

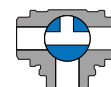


POSITION 1



POSITION 2

**T-PORT FLOW PATH B**



POSITION 1

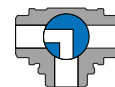


POSITION 2

**L-PORT FLOW PATH A**

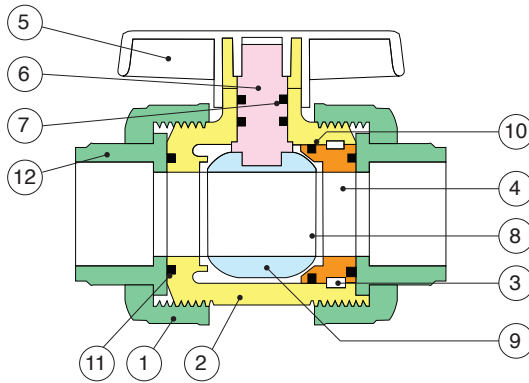


POSITION 1



POSITION 2

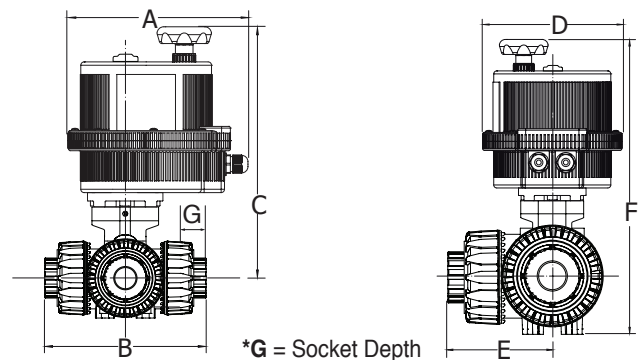
## BILL OF MATERIALS FOR PVC-BV3\* / CPVC-BV3\*



N POS	PART NAME	MATERIAL	N PCS
1	UNION NUT	PVC/CPVC/PP	3
2	BODY	PVC/CPVC/PP	1
3	LOCKING STRIP	PVDF	1
4	CARRIER	PVC/CPVC/PP	1
5	HANDLE	ABS	1
6	STEM	PVC/CPVC/PP	1
7	STEM O-RING	EPDM/VITON/Silicone	2
8	BALL SEAT	PTFE	3
9	BALL	PVC/CPVC/PP	1
10	CARRIER O-RING	EPDM/VITON/Silicone	1
11	FACE O-RING	EPDM/VITON/Silicone	3
12	CONNECTOR	PVC/CPVC/PP	3

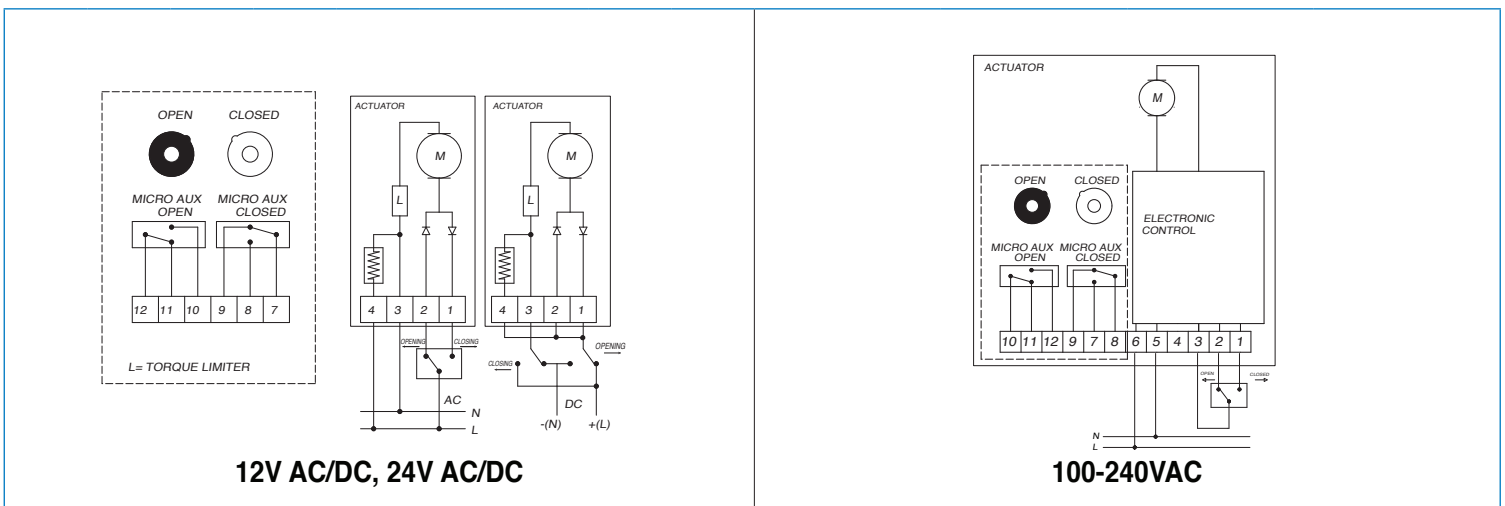
## DIMENSIONS

SIZE	A	B	C	D	E	F	G	ACT.
1/2"	6.41	4.96	7.64	4.84	4.96	8.78	0.89	VB015
3/4"	6.41	5.76	7.85	4.84	5.76	9.21	1.00	VB015
1"	6.41	6.56	7.94	4.84	6.56	9.48	1.13	VB015
1-1/4"	6.41	7.71	8.20	4.84	7.71	10.01	1.26	VB015
1-1/2"	7.48	8.32	10.15	6.18	8.32	12.20	1.38	VB030
2"	7.48	9.99	10.53	6.18	9.99	12.97	1.50	VB030



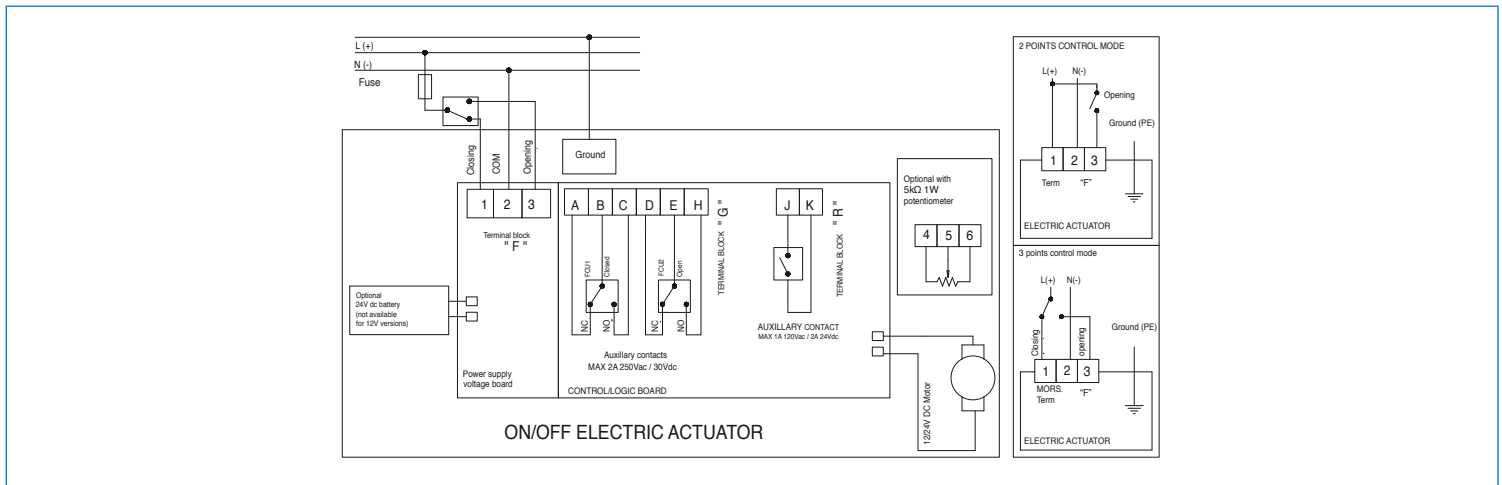
## ON/OFF WIRING DIAGRAM - VB015

12V AC/DC, 24V AC/DC & 100-240VAC



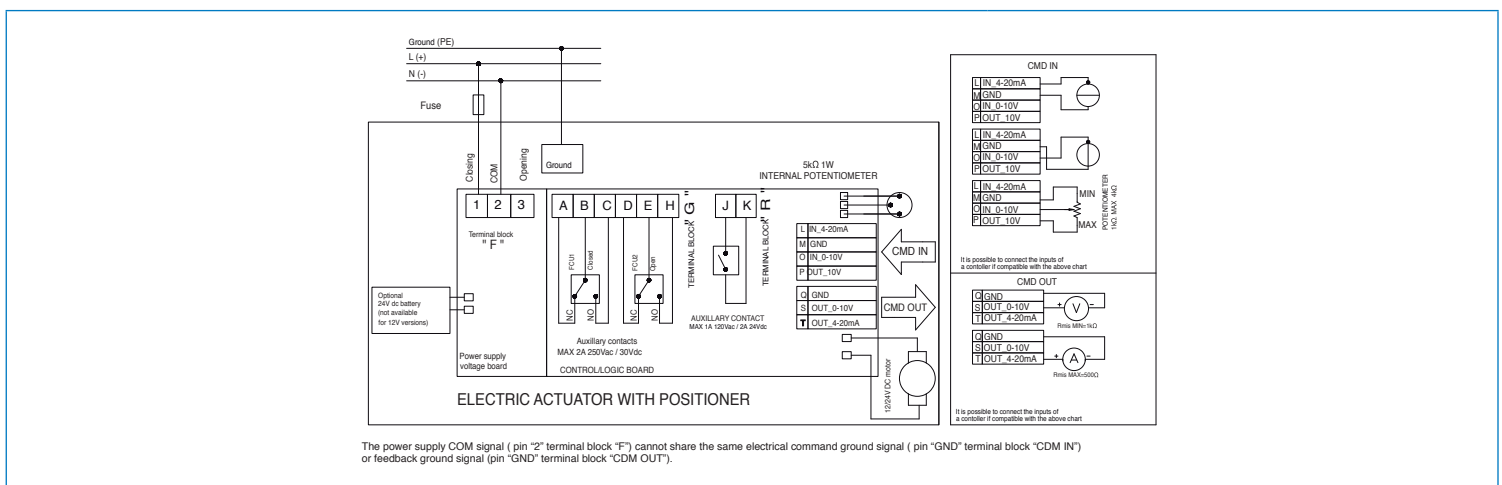
## ON/OFF WIRING DIAGRAM

12V AC/DC, 24V AC/DC & 100-240VAC



## POSITIONER WIRING DIAGRAM

12V AC/DC, 24V AC/DC & 100-240VAC



## THREE-POSITION WIRING DIAGRAM

12V AC/DC, 24V AC/DC & 100-240VAC

